



retrofit's TOP 25 PRODUCTS

Products are an integral part of any trade publication. As such, *retrofit* is celebrating the 25 products that received the most reader clicks on our website from October 2022 through October 2023. During that time, *retrofit*'s staff posted approximately 700 products to the magazine's website, so the Top 25 are standouts.

"We consider *retrofit* a source for our readers to find innovative solutions and products for their own retrofit projects," says Publisher John Riester. "The Top 25 Products special in our January-February issue is a great resource to our readers, showcasing the products readers' peers thought were most interesting within the pages of *retrofit* and on our website."

Enjoy *retrofit*'s 11th-annual Top 25 Products!

1 INSULATION BOARDS PROVIDE CONTINUOUS INSULATION SOLUTION

Siplast has added two high-performance polyiso wall insulation products to the company's existing WALLcontrol Air & Water-Resistive Barrier (AWB) Systems, offering an exterior continuous insulation solution and supporting the company's continued expansion into the building enclosure space. The new wall insulation solutions include Siplast WALLcontrol Polyiso Foil-Faced Insulation board, which combines high R-value, Class-A foam core and durable aluminum facers in a high-performance rigid wall insulation. Additionally, Siplast WALLcontrol Polyiso Glass-Faced Insulation board combines high R-value, Class-A foam core and durable coated glass facers in a high-performance rigid wall insulation. The WALLcontrol AWB Systems include wall membranes, critical transition membranes, and accessories that provide solutions for above-grade vertical walls and enable complex transitions from roofing and waterproofing systems.

www.siplast.com



2 DESIGN CUSTOM LIGHTING FIXTURES AND 3D PRINT THEM

Cooper Lighting Solutions' newest technology, PentaLux, brings ideas to life in a matter of minutes with 3D-printed lighting technology. If a user can think it, the company can do it. Cooper Lighting Solutions allows creators to design custom lighting fixtures in any shape, color and texture they can imagine. Using the website's configuration tool, lighting fixtures can be designed in real-time and visualized in a space from the comfort of a



computer. PentaLux products are positioned to be used in hospitality settings, as well as when performance lighting is needed.

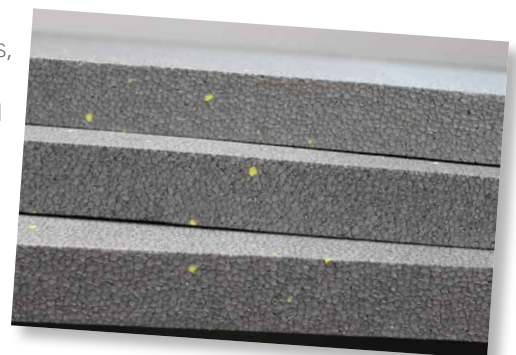
www.cooperlighting.com

3 POLYSTYRENE INSULATION BOARD OMITTS FLUOROCARBON-BLOWING AGENTS

Sto Corp. has introduced Sto GPS Board, a graphite-enhanced, 100 percent closed-cell expanded polystyrene insulation board that can be used in a variety of applications, including the new StoTherm ci GPS wall system and improved StoTherm ci MVES and StoPowerwall ci systems. Sto GPS Board is cut in thicknesses that align with ASHRAE 90.1 prescriptive continuous insulation requirements, optimizing economy while minimizing wall thickness. With an R-value per inch of 4.7 at 75 F, Sto GPS Board is comparable to extruded polystyrene products. Sto GPS Board does not contain fluorocarbon-blowing agents, meaning it has low global-warming potential and zero ozone-depletion potential.

The product, which is available in all 50 states, is vapor semi-permeable, controlling inward vapor drive while preserving the ability of the wall to dry out if exposed to incidental moisture.

www.stocorp.com



4 ACOUSTIC PENDANT IS REDESIGNED AS PART OF ITS 10-YEAR ANNIVERSARY

Luxxbox, an international designer of acoustic lighting, has redesigned its iconic Vapor Echo acoustic pendant, which was released 10 years ago. The upgraded Vapor Echo's new PET joinery technique maximizes acoustic surface area, significantly increasing acoustic performance while refining the appearance of the internal structure. The redesign also delivers increased lumen output for brighter illumination and more sustainable construction, reducing metal components, packaging waste and carbon footprint during shipping. The product is available in three sizes, a wide range of colors, high-performance dimmable LED light source, optional upward wash and advanced controls. The shade is crafted from PET material manufactured from recycled plastics, and the fixture is fully recyclable at the end of its life.

www.luxxbox.com/product/vapor-echo



5 STABILIZE GRASS WITH PLASTIC PERMEABLE PAVERS



TRUEGRID, a permeable paver company, has introduced TRUEGRID ROOT Permeable Pavers. The design serves

as a method for stabilizing grass, eliminating the need for ground excavation. ROOT can be positioned on existing grass surfaces, functioning as a protective mesh that enables pedestrians and cars to park on or traverse the surface without creating mud or ruts. The engineered design is comprised of flexible joints, strong cell walls and robust connectors. Its patented X-Anchor technology distributes the weight from people and vehicle tires and spreads the point load to the existing soil below. Over time, ROOT naturally becomes completely covered with grass, seamlessly blending into the surroundings like a turfgrass area. ROOT is constructed entirely from 100 percent post-consumer recycled high-density polyethylene.

www.truegridpaver.com

6 JAWS ARE COMPATIBLE WITH PRESS TOOLS

NIBCO INC. has released its jaws that are compatible with the NIBCO PC-280 tool for use on the PressACR product line. The new jaws can be used to press the full PressACR size range through 1 3/8 inches with one tool. Available in sizes, ranging from 1/4 to 1 3/8 inches, the patent-pending PressACR fittings feature an interior groove design on the press ends that help support high-pressure requirements of HVACR systems. The PressACR system is a copper tube joining method that delivers consistent joint quality and is designed to meet the demands of air-conditioning and refrigeration applications. In addition to the NIBCO PC-280 press tool, the new jaws (up to 1 1/8 inch) are compatible with other press tools, featuring a force of 32 kilonewtons, including tools manufactured by RIDGID and Milwaukee.

www.nibco.com



7 POLYISO PRODUCT IS SUITED FOR FOUNDATION WALLS, UNDER-SLAB USE

Atlas has introduced EnergyShield XR, a polyiso insulation product specifically engineered to provide continuous insulation for foundation walls and under-slab use. The polyiso rigid foam board is comprised of a closed-cell structure with impermeable, durable facers that offer a high R-value per inch of thickness and resist moisture absorption, providing an effective material to insulate in all climates. With a standard compression strength at 25 psi, EnergyShield XR resists pressures from backfill, and the durable facers offer added impact protection. Polyiso is compatible with the majority of mastic or solvent-based products, making component selection simpler and installation quicker. EnergyShield XR is manufactured with environmentally responsible processes, an established core formulation and recycled content.

wall.atlasrwi.com/energyshield-xr





8 RECLAIMED TROPICAL HARDWOODS ARE FSC-CERTIFIED

Nova USA Wood Products has enhanced its premium line of Real Wood Solutions and accessories with the addition of reclaimed tropical hardwoods products. The descendants of European marine projects, all of Nova USA's reclaimed tropical hardwoods are 100 percent FSC-certified and available for the building of outdoor projects, ranging from large construction applications to beams, posts and frames, because of their strength and durability. The company's reclaimed Angelique tropical

hardwood, for example, offers the same durability as new, freshly cut supplies while boasting a gray patina that blends with many architectural designs. In addition, Nova USA supports every purchase with in-depth installation, care and maintenance information.

www.novausawood.com

9 STEEL STONE COATED ROOFS ARE CRRC-RATED

Westlake Royal Roofing Solutions has launched two Unified Steel Stone Coated Roofing colors that have been rated by the Cool Roof Rating Council. The new colors—Harborwood and Stirling Gray—are offered in PINE-CREST Shake and PACIFIC tile profiles. Harborwood and Stirling Grey also exceed California Energy Code Title 24



Part 6 Cool Roof Requirements and, with a Solar Reflective Index greater than 20, meet Los Angeles County's more stringent SRI requirements. Unified Steel Stone Coated Roofing is just 1 1/2 pounds-per-square-foot. When paired with above-sheathing ventilation, Unified Steel enhances energy efficiency. All Unified Steel products are Very Severe Hail-rated, offer a Class-A fire rating (when used with designated accompanying underlay materials) and are Hurricane Performance Rated with Miami-Dade County.

westlakeroyalroofing.com/unified-steel

10 MESH RAILING IS WEATHER-RESISTANT

Superior Aluminum Products has made available Series 9M mesh railing, which features a code-compliant, contemporary design. The railing combines a modern look with the benefits of low-maintenance aluminum frames. Mechanically fastened Series 9M is durable and resistant to wind, rain and extreme temperatures while allowing for a view beyond the barricade. Mesh is available in woven wire or round or square perforated panel options in four finishes: black, dark bronze, gray and white.

All products are built and installed to exact project specifications.

bit.ly/mesh-railing



11 INTELLIGENT HVAC LEARNS USERS' DAILY ROUTINES

KOVA has launched KOVA Comfort Intelligent HVAC, an AI-powered HVAC system that creates more comfortable environments based on a variety of inputs, including users' daily routines. KOVA Comfort harnesses advanced machine learning in conjunction with an AI-driven processor to enhance system performance over time, simultaneously improving energy efficiency and ensuring ultimate comfort within any given space. The product avoids inefficient downtime and excessive energy use by combining existing energy-efficiency capacities with AI and a variable-speed compressor and fan. The onboard processor captures, analyzes, and learns from diverse inputs, including ambient temperature, humidity, occupancy and day-to-day usage patterns. Standard thermostat controls and Bluetooth mesh connectivity are available between units to optimize comfort across living spaces.

kovaproducts.com



12 HEAT PUMPS, AIR CONDITIONER WORK WITH EXISTING INDOOR COMPONENTS

Allied Air Enterprises has released its Pro Series that features two new heat pumps and an air conditioner available exclusively through the Armstrong Air and AirEase brands. The new 4SHP22LX and 4SHP18LX heat pumps offer up to 22 SEER (20.9 SEER2) and 20 SEER (19 SEER2), respectively, and the new 4SCU23LX air conditioner features up to 23 SEER (21.5 SEER2) efficiency ratings. Allied Air's new Pro Series products work with existing indoor components to simplify the 2023 regulatory transition for distributors and dealers. The products allow dealers to fine-tune the capacity to the application and give consumers the widest range of compressor modulation for the best dehumidification and comfort when compared to the rest of the product line.

alliedair.com



13 EXPLORE SINGLE LENS SOLUTIONS IN ONE OPTICS KIT

New Energy has added its New Energy LEDiL Optics Kit, which consists of a single LED mounted on a printed circuit board (PCB) and attached to a heatsink. The PCB is manufactured with a series of precisely placed holes that correspond to the mounting pins of all the members of LEDiL's single-lens products. When aligned pins-to-holes, this assembly guarantees the proper alignment of the lens to the LED for maximal optical efficiency. Accompanying the LED/PCB/heatsink are 15 lenses, three each from five lens families. Users of this kit will be able to explore the many secondary optical distributions available to them through LEDiL's precision-molded lens assemblies. The kits also can be customized to particular LED needs.

new-energyllc.com

14 DOOR COLLECTION FEATURES EXPANSIVE GLASS

The Veris collection from Therma-Tru includes folding, sliding, hinged and pivot glass doors with expansive glass for an abundance of natural light, in sleek designs and minimalist styles. The collection's pivot entry doors can be up to 5-feet wide by 10-feet tall with a pivot point inward on the door. Veris hinged entry doors are available in single and French-door configurations for a simplistic look in the front or back of the home. Veris folding glass doors can include an optional swing door to allow users to easily enter or exit a room without opening all the panels. Stainless-steel wheels provide easy operation in top- or bottom-hung applications. Veris sliding glass doors can include optional built-in pocket doors to deliver unobstructed views when fully opened. Polymer rollers and stainless-steel bearings provide smooth, quiet operation.



Veris sliding glass doors can include optional built-in pocket doors to deliver unobstructed views when fully opened. Polymer rollers and stainless-steel bearings provide smooth, quiet operation.

veriscollection.com

15 EMERGENCY DRIVER IS 60 PERCENT SMALLER

IOTA has made available the ILBLP CP07 compact emergency driver, delivering advanced emergency performance in a minimal enclosure that is suited for limited and shallow compartment spaces in state-of-the-art lighting designs. The reduced size of the ILBLP CP07 provides an emergency solution that is up to 60 percent smaller than comparable emergency driver options. The compact emergency driver's 7-watt constant power output delivers consistent, non-diminishing emergency illumination for the entire runtime. It features self-test/self-diagnostics and intelligent AC Activate battery circuitry to simplify installation and labor time. Additionally, the compact emergency driver is available with side- or bottom-feed wire terminals to accommodate individual fixture designs.

www.iota-engineering.com



16 SUNSHADE FINS ARE DESIGNED FOR EXTERIOR WALLS

SAF has introduced vertical and horizontal sunshade fins for installation on exterior walls, primarily over windows or glazed openings, delivering benefits, ranging from energy savings to occupant comfort and more. SAF sunshade fins, which can be anodized, powder-coated or painted, can be fabricated up to 20 feet in length.

Fins can be made from sheet metal or extruded shapes. SAF offers a variety of in-stock sunshade fin extrusions for rush orders and custom extruded fin shapes for specialty architectural needs. Fins can be fabricated to varying shapes and sizes and installed in a specified orientation on the building to optimize daylight throughout an interior space.

www.saf.com



17 ALLOY VEINING LOOKS LIKE BRASS AND STEEL IN QUARTZ COUNTERTOPS

Cambria has launched six new designs for residential and commercial applications. Alloy veining is the key feature in the initial four designs of the Alloy Collection, which captures the reflectivity and luster of brass and steel. Three different surface characteristics—Smooth, Sculpted and Satin Ridge—are offered in the collection, with veining that jets against white, marbled canvases. Rounding out the offering are two additions to Cambria's marble-alternative designs. The understated tone-on-tone designs feature cool gray and warm gold veining. All Cambria quartz products are nonabsorbent; easy to clean; and resistant to scratches, chips and stains. They are made in America by a family-owned company and backed by a transferable Full Lifetime Warranty.

www.cambriausa.com

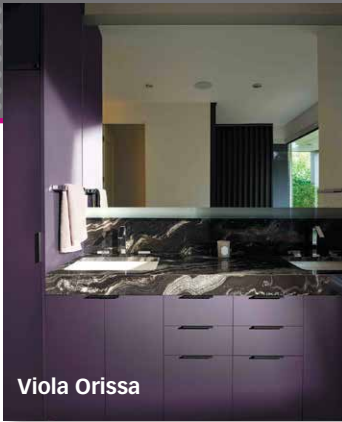


Berkshire Brass Satin Ridge

DID YOU KNOW?

Carlisle TPO membrane is available in **three standard colors and five specialty colors**, which is more than any other manufacturer offers.





Viola Orissa

18 SURFACE MATERIAL LAUNCHES SIX NEW COLORS

To commemorate the brand's 10th anniversary, FENIX Innovative Materials is now available in six new colors inspired by

natural and manmade sights from around the world. Designed in Italy and available in North America exclusively through Formica Corp., the matte and soft-to-the-touch surface includes the following new colors: Giallo Evora, a delicate yellow inspired by the architecture of Evora, Portugal; Verde Katami, a soft green with tones of gray channeling the peaks of Kitami in the Hokkaido region of Japan; Blu Shaba, deep blue blending with nuanced shades of green like a malachite from the Shaba region of Congo; Viola Orissa, inspired by the Indian region said to be the birthplace of eggplant; Grigio Aragona, a bridge between the collection's existing browns and grays, inspired by Sicily's mud volcanos; and Rosso Namib, a warm brick red evoking imagery of the red desert of Namibia.

www.fenixforinteriors-na.com

19 FREESTANDING TUB FEATURES MULTI-FACETED TEXTURED SURFACE

Acquabella has released its Stelvio freestanding tub that features a singular textured surface mimicking the intricacy of a multi-faceted diamond or the natural cuts of an iceberg. Stelvio is built to look good from every angle and is crafted from Acquabella's signature Dolotek material, a mineral composite that creates a finish that is smooth to the touch. Dolotek features an easy-to-clean antibacterial surface that is durable and resistant to UV rays and thermal shock. The tub, which measures 66-inches long by 33-inches wide and is 25-inches deep, is available in a snow-white hue with options for a matte or gloss finish.

acqua.bella.us



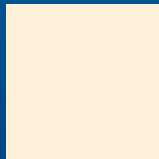
SURE-WELD™ TPO STANDARD COLORS



White



Gray



Tan



Scan here to learn more.



Rock Brown



Slate Gray



Terra Cotta



Patina Green



Medium Bronze

Experience the Carlisle Difference | 800-479-6832 | www.carlisesyntec.com

Carlisle and Sure-Weld are trademarks of Carlisle. © 2023 Carlisle.



20 TOUCHUP SCRATCHES ON METAL-PANEL FINISHES

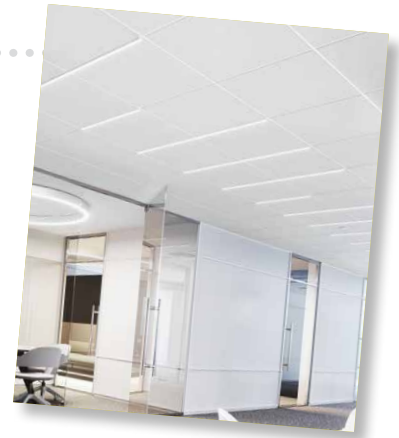
The PAC-CLAD Paint Pen is a convenient way to quickly, neatly and effectively touch up scratches and other damage to the PAC-CLAD finish. Applying PAC-CLAD touchup paint protects the metal substrate and returns a building's architectural metal façade to its intended appearance. The paint pens contain 0.28 ounces of PAC-CLAD paint and can be shipped anywhere. PAC-CLAD paint pens are available for standard colors, which do not include metallic, weathered copper, weathered steel, wood grain or ore finishes. The shelf life of the paint in the pens is one year, and the pen should be stored with the cap tightly secured and in a horizontal position.

www.pac-clad.com

21 CEILING PANELS PROVIDE THREE LEVELS OF SOUND ABSORPTION PLUS SOUND BLOCKING

Armstrong World Industries is increasing education around its portfolio of Total Acoustics ceilings to ensure architects, designers, owners, and managers of buildings of all shapes and sizes are aware of the options that exist for reducing noise and blocking sound from traveling to adjacent spaces. All Total Acoustics ceilings have a Ceiling Attenuation Class of 35 or higher, which delivers effective sound blocking, ensuring confidential speech privacy and sound isolation between adjacent spaces that share the same plenum. Moreover, Total Acoustics offers a wide variety of ceiling material options, including mineral fiber, metal, wood and wood fiber. To help customers select the best product for their project, Armstrong offers a complimentary custom acoustical report and has an NVLAP-accredited acoustical testing laboratory on its campus for quality control. Ceilings with Total Acoustics performance contribute to WELL and LEED and address acoustical design guidelines, including ANSI/ASA S12.60, FGI Guidelines, HIPAA and HCAHPS.

armstrongceilings.com/totalacoustics



22 CUSTOM ATTACHMENT SYSTEM IS SUITED FOR RAINSCREEN APPLICATIONS

Grad Concept USA and Tantimber USA jointly have introduced a custom attachment system for Tantimber's

range of ThermoWood decking and cladding products. The system, custom-built upon Grad's proprietary rail fasteners, enables Tantimber customers to save time and overall installation costs. Sourced from FSC- and PFEC-certified forests, Tantimber decking and cladding products are produced using the Thermowood manufacturing process, transforming the timber into stable and durable finished wood products standing up to extreme environments. The Grad system, introduced to the U.S. market in 2020, includes an award-winning attachment solution for cladding, suited for rainscreen applications. Grad's attachment components are virtually maintenance-free, offering maximum resistance to rot and promoting greater ventilation to help prevent cupping.

us.gradconcept.com, www.tantimber.com/en

23 EXTEND THE LIFE OF ARCHITECTURAL PRODUCTS WITH POWDER COATINGS

Axalta Coating Systems, a supplier of coatings solutions to the architectural and design segment, has launched its latest ICONICA collection of Alesta SD powder coatings as part of an exclusive global line to the U.S. market. ICONICA coatings are based on a super-durable polyester resin system. The collection combines higher-grade pigments and stabilizers with exterior durability that extends the life cycle of architectural projects. ICONICA is compliant with international standards, such as Qualicoat Class 2 and AAMA2604. The collection, which includes 40 finishes, comes with a warranty up to 25 years. The Alesta SD range of powder coatings is solvent- and VOC-emissions-free and produces significantly less hazardous waste compared with solvent-borne coatings solutions.

www.axalta.com





24 FAUCET LINE PAIRS COMMERCIAL CONSTRUCTION WITH AESTHETICS

T&S Brass and Bronze Works, a manufacturer of food-service and commercial plumbing products, has debuted its aesthetic faucet line,

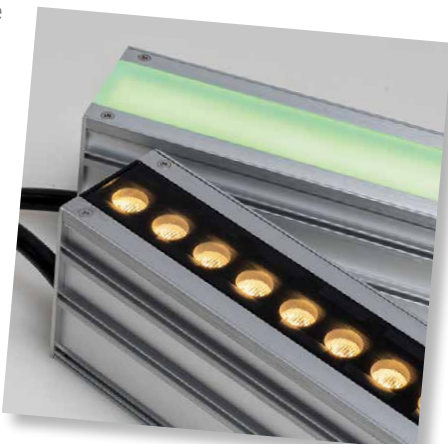
LakeCrest. The line features five designs, including single-lever faucets, a concealed widespread faucet design, metering faucet and a semi-pro kitchen faucet. Offering durability in an elegant modern package, LakeCrest's tapered shape meets the design needs of contemporary office buildings and public facilities. Constructed of stainless steel, the semi-pro kitchen faucet is a light-duty commercial faucet designed for customer-facing applications. The single-handle faucets—with models for single hole and 4-inch-center applications—are available in chrome and brushed nickel finishes.

www.tsbrass.com/brands/lakecrest

25 LIGHTING FIXTURE IS RATED TO BE WALKED AND DRIVEN OVER

Acclaim Lighting has introduced Terra Linear, a durable walk- and drive-over-rated fixture available in eight color options, including dynamic and static white, for long-run architectural lighting applications. Terra Linear has a drive-over rating of up to 6,000 pounds with an anti-slip top coating and anti-theft security screws for use in all public areas. It is available in a standard optic version or a 100 percent frosted glass, direct-view version. The inground linear series is available in 2700K, 3000K, 3500K, 4000K, Dynamic White (2700K-6000K), Quad Spectrum (RGBW, W=3000K), Quad White 4000K and Quad White 6000K. The white version of the fixture produces up to 1400 lumens while the color versions deliver up to 700 lumens. The fixtures offer many beam angles, as well as asymmetric wall wash. They are available in four different output levels, from 20 watts per linear foot to 2.5 watts per linear foot.

acclaimlighting.com/terra-linear



SCHWEISS

HYDRAULIC & BIFOLD DOORS

Manufacturing custom designed one-piece hydraulic doors and lift-strap bifold doors ... any application ... any size!



Schweiss Doors designed and built the glass bifold doors for the Golden 1 Center in Sacramento, CA

SCHWEISSDOORS.COM

EARLY WARNING WATER LEAK DETECTION

Installed in over 23,000 sites!

CEILING GUARD®



WATER ALERT®

WATER ALERT SENSOR CABLE



- 5 Year Warranty
- Made in the USA
- In Business 40 Years
- Ultra High Quality

DORLEN Products Inc.
1-800-533-6392
WWW.WATERALERT.COM